



**REGIONAL SPECIALISED METEOROLOGICAL CENTRE-TROPICAL CYCLONES, NEW DELHI
TROPICAL WEATHER OUTLOOK**

DEMS-RSMC TROPICAL CYCLONES NEW DELHI DATED 04.12.2024

TROPICAL WEATHER OUTLOOK FOR THE NORTH INDIAN OCEAN (THE BAY OF BENGAL AND THE ARABIAN SEA) VALID FOR THE NEXT 168 HOURS ISSUED AT 0600 UTC OF 04.12.2024 BASED ON 0300 UTC OF 04.12.2024.

BAY OF BENGAL:

Scattered low and medium clouds with embedded moderate to intense convection lay over southeast Bay of Bengal and south Andaman Sea. Scattered low and medium clouds with embedded isolated weak to moderate convection lay over rest Bay of Bengal and north Andaman Sea.

***PROBABILITY OF CYCLOGENESIS (FORMATION OF DEPRESSION) DURING NEXT 168 HRS:**

24 HOURS	24-48 HOURS	48-72 HOURS	72-96 HOURS	96-120 HOURS	120-144 HOURS	144-168 HOURS
NIL	NIL	NIL	NIL	NIL	NIL	NIL

***NOTE: EVERY 24HR FORECAST IS VALID UPTO 0300 UTC (0830 IST) OF NEXT DAY**

ARABIAN SEA:

Yesterday's Well-Marked Low-Pressure Area over Coastal Karnataka and adjoining east-central Arabian Sea moved nearly westwards, weakened into a Low-Pressure Area over east-central & adjoining southeast Arabian sea at 0300 UTC of today, the 04th December, 2024. The associated cyclonic circulation extends up to 5.8 km above mean sea level. It is likely to move westwards and become less marked during next 24 hours.

Scattered low and medium clouds with embedded intense to very intense convection lay over adjoining southeast Arabian Sea. Scattered low and medium clouds with embedded isolated weak to moderate convection lay over the northwest Arabian Sea, off south Gujarat coast, gulf of Cambay west central & south Arabian Sea, Lakshadweep Island Area, Maldives & Comorin Area, rest south Arabian Sea, Maldives & Comorin Area.

***PROBABILITY OF CYCLOGENESIS (FORMATION OF DEPRESSION) DURING NEXT 168 HRS:**

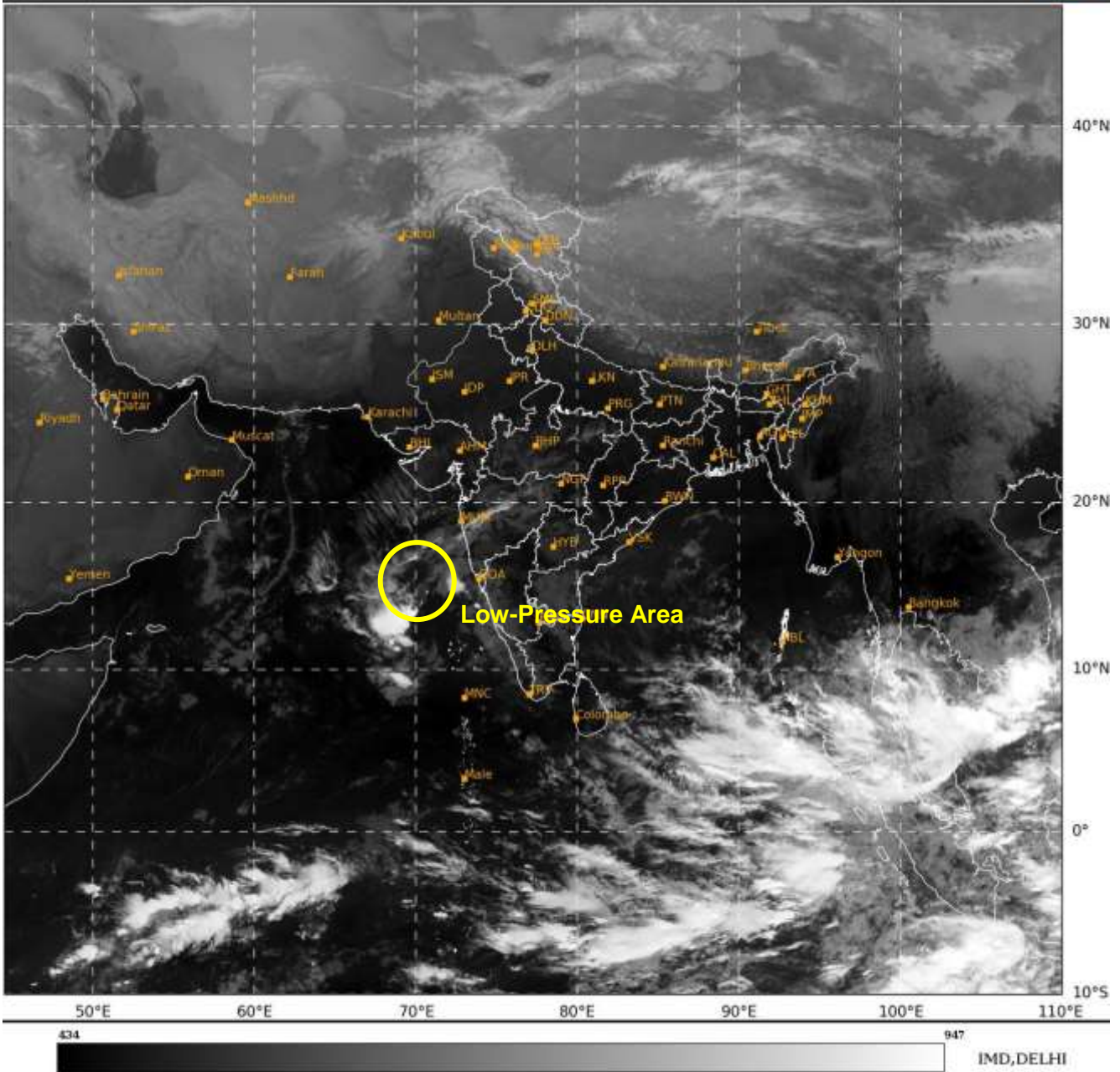
24 HOURS	24-48 HOURS	48-72 HOURS	72-96 HOURS	96-120 HOURS	120-144 HOURS	144-168 HOURS
NIL	NIL	NIL	NIL	NIL	NIL	NIL

***NOTE: EVERY 24HR FORECAST IS VALID UPTO 0300 UTC (0830 IST) OF NEXT DAY**

REMARKS: NIL

SAT : INSAT-3DR IMG
IMC_TIR1 10.8 um
LIC Mercator

04-12-2024/(0345 to 0412) GMT
04-12-2024/(0915 to 0942) IST



Cloud distribution: (a) Isolated: <25%, Scattered:25-50%, Broken: 51-75%, Solid:>75%, Convection Intensity: (a) Weak: Cloud Top Temperature (CTT) >-25°C, (b) Moderate: CTT: - 25°C to -40°C, (c) Intense: CTT: - 41°C to -70°C and (d) Very Intense: : Less than -70°C
PROBABILITY OF CYCLOGENESIS (FORMATION OF DEPRESSION):NIL: 0%, LOW: 1-33%, , MODERATE: 34-66% AND HIGH: 67-100%
This is a guidance Bulletin for WMO/ESCAP Panel Member countries. Visit respective National websites for Country specific Bulletins